

CORRUGATE

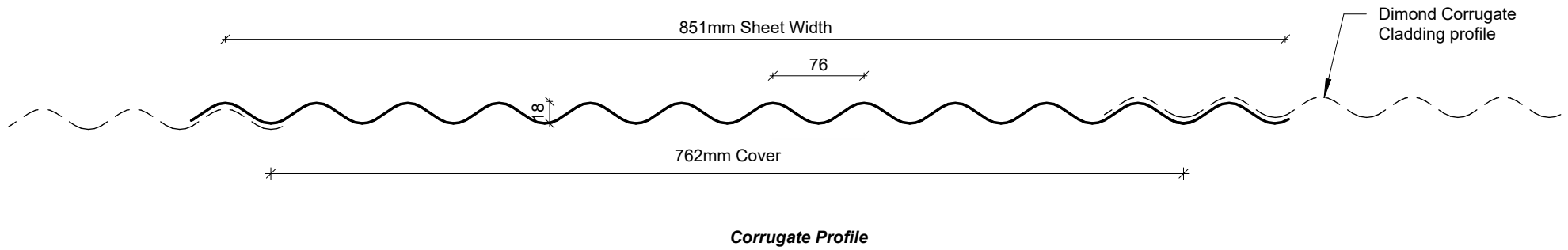
RESIDENTIAL VERTICAL WALL CLADDING

DETAILS:

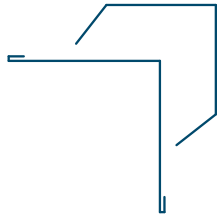
REV: DATE:

CRVC00	Cover Sheet	1	July 2025
CRVC01	Profile Summary	1	July 2025
CRVC02	Typical Flashing Detail	1	July 2025
CRVC03	Barge Flashing Detail	1	July 2025
CRVC04	Transverse Junction Detail	1	July 2025
CRVC05	External Corner Detail	1	July 2025
CRVC06	Internal Corner Detail	1	July 2025
CRVC07	Base Detail	1	July 2025
CRVC08	Soffit Detail	1	July 2025
CRVC09	Window Head Detail	1	July 2025
CRVC10	Window Jamb Detail	1	July 2025
CRVC11	Window Sill Detail	1	July 2025
CRVC12	Meterbox Head Detail	1	July 2025
CRVC13	Meterbox Jamb Detail	1	July 2025
CRVC14	Meterbox Sill Detail	1	July 2025
CRVC15	Pipe Penetration Detail	1	July 2025
CRVC16	Cladding to Concrete Junction Detail	1	July 2025
CRVC17	Cladding to Brick Junction Detail	1	July 2025
CRVC18	Cladding to Panel Junction Detail	1	July 2025
CRVC19	3D Window Flashing Detail	1	July 2025

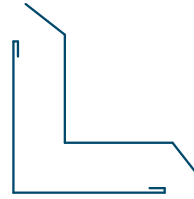
PROFILE OVERVIEW	
MINIMUM PITCH	8°
RIB TYPE	Low
RIBS PER SHEET	11.5 Ribs per sheet
WIDTH	762mm Cover, 851mm Sheet



Profile Summary



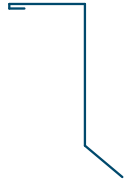
External Corner Flashing



Internal Corner Flashing



Base Flashing



Soffit Flashing



Window Head Flashing



Window Jamb Flashing



Sill Flashing

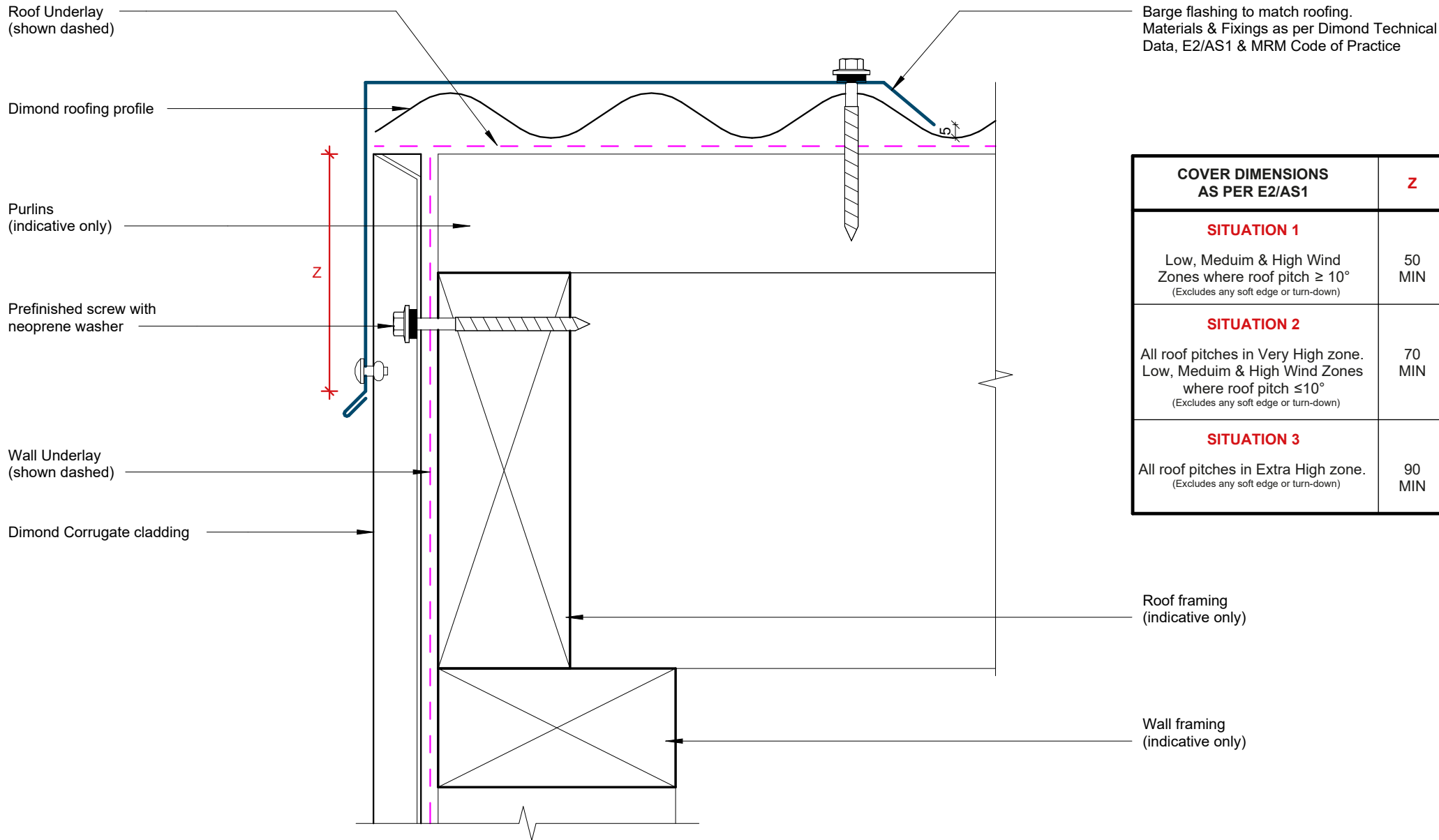


Window Sill Flashing



Transverse Flashing

Typical Flashing Detail



COVER DIMENSIONS AS PER E2/AS1	Z
SITUATION 1 Low, Medium & High Wind Zones where roof pitch $\geq 10^\circ$ (Excludes any soft edge or turn-down)	50 MIN
SITUATION 2 All roof pitches in Very High zone. Low, Medium & High Wind Zones where roof pitch $\leq 10^\circ$ (Excludes any soft edge or turn-down)	70 MIN
SITUATION 3 All roof pitches in Extra High zone. (Excludes any soft edge or turn-down)	90 MIN

Barge Flashing Detail



©Dimond 2023, all rights reserved. The information and specifications contained in this document are proprietary to Dimond and may not be used other than for the purpose of designing or building a roof or roofing system solely using products supplied or approved by Dimond ("Permitted Purpose"). You may copy this document solely for the Permitted Purpose, but may not otherwise copy, publish, distribute or modify this document without Dimond's prior written consent. Dimond will not be liable for any use of this document or information and specifications contained in this document, other than for the Permitted Purpose

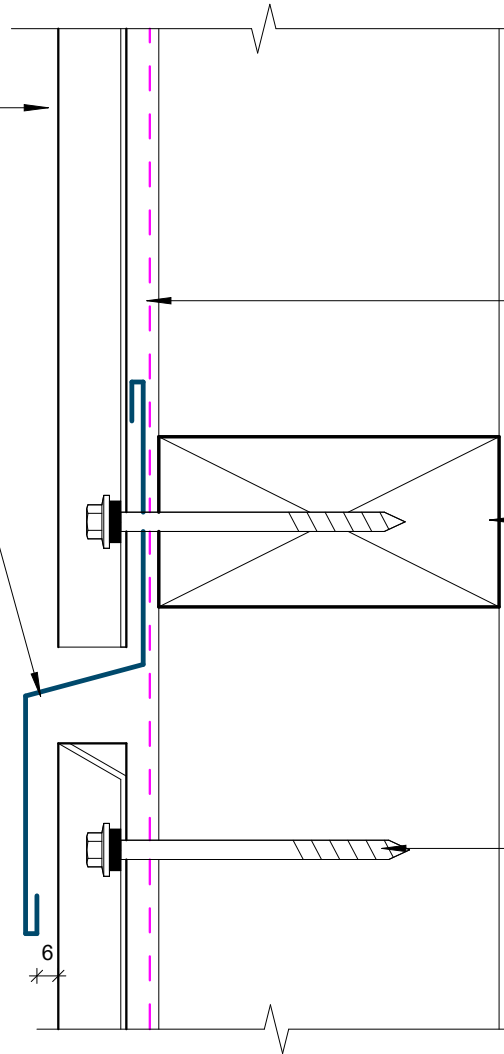
Rev: 1 **Corrugate Residential Vertical Cladding**
Direct Fixed

Date: July 2025 Scale: 1 : 2 Sheet: **CRVC03**

Dimond Corrugate Vertical fixed Wall Cladding profile

Purpose made flashing, ensure fall to front
Flashing to match wall cladding
Materials & Fixings as per Dimond Technical Data, E2/AS1 & MRM Code of Practice

75 min.
25 min.
50 min.
5 min.
6

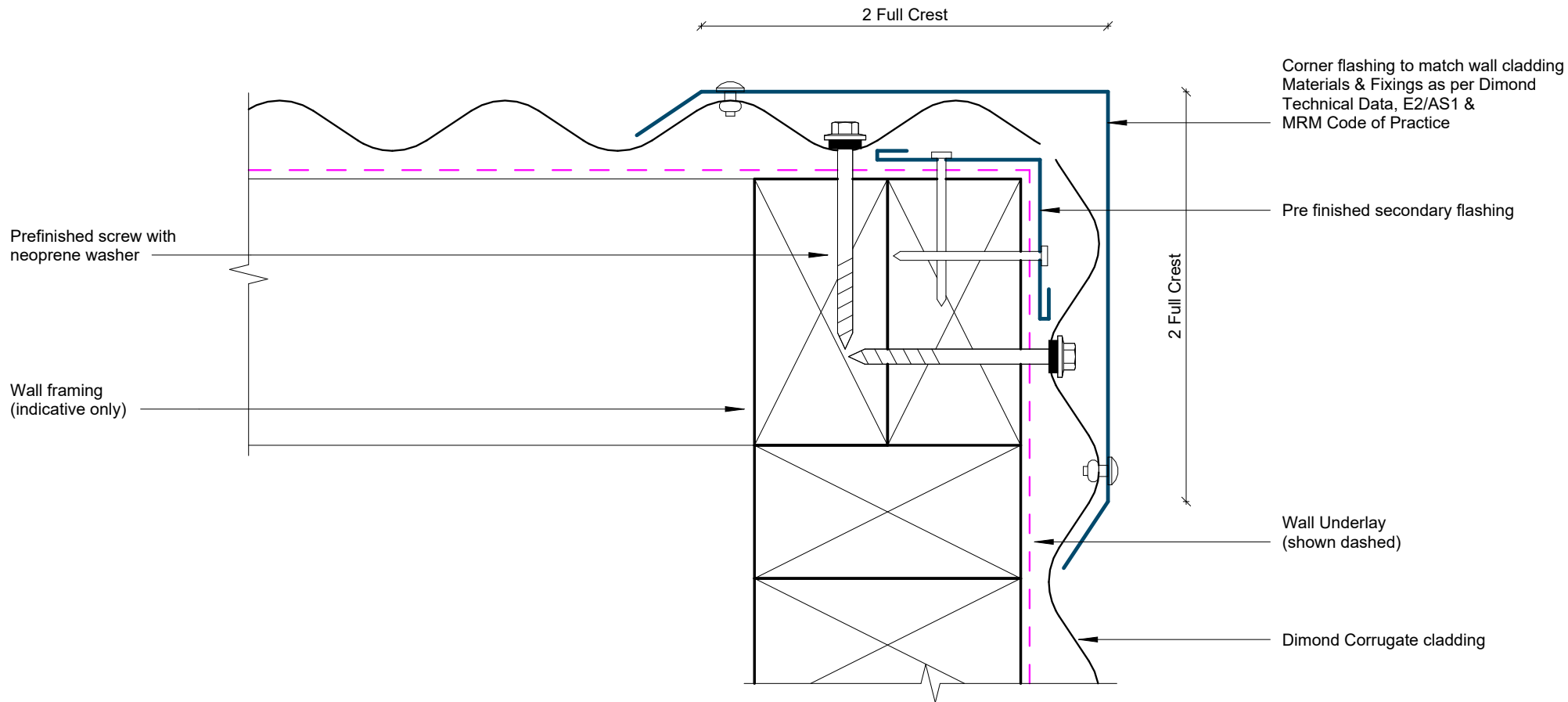


Wall Underlay
(shown dashed)

Wall framing
(indicative only)

Prefinished screw with
neoprene washer

Transverse Junction Detail



External Corner Detail

Rev: 1 **Corrugate Residential Vertical Cladding**
Direct Fixed

Date: July 2025 Scale: 1 : 2 Sheet: **CRVC05**

Wall Underlay
(shown dashed)

Wall framing
(indicative only)

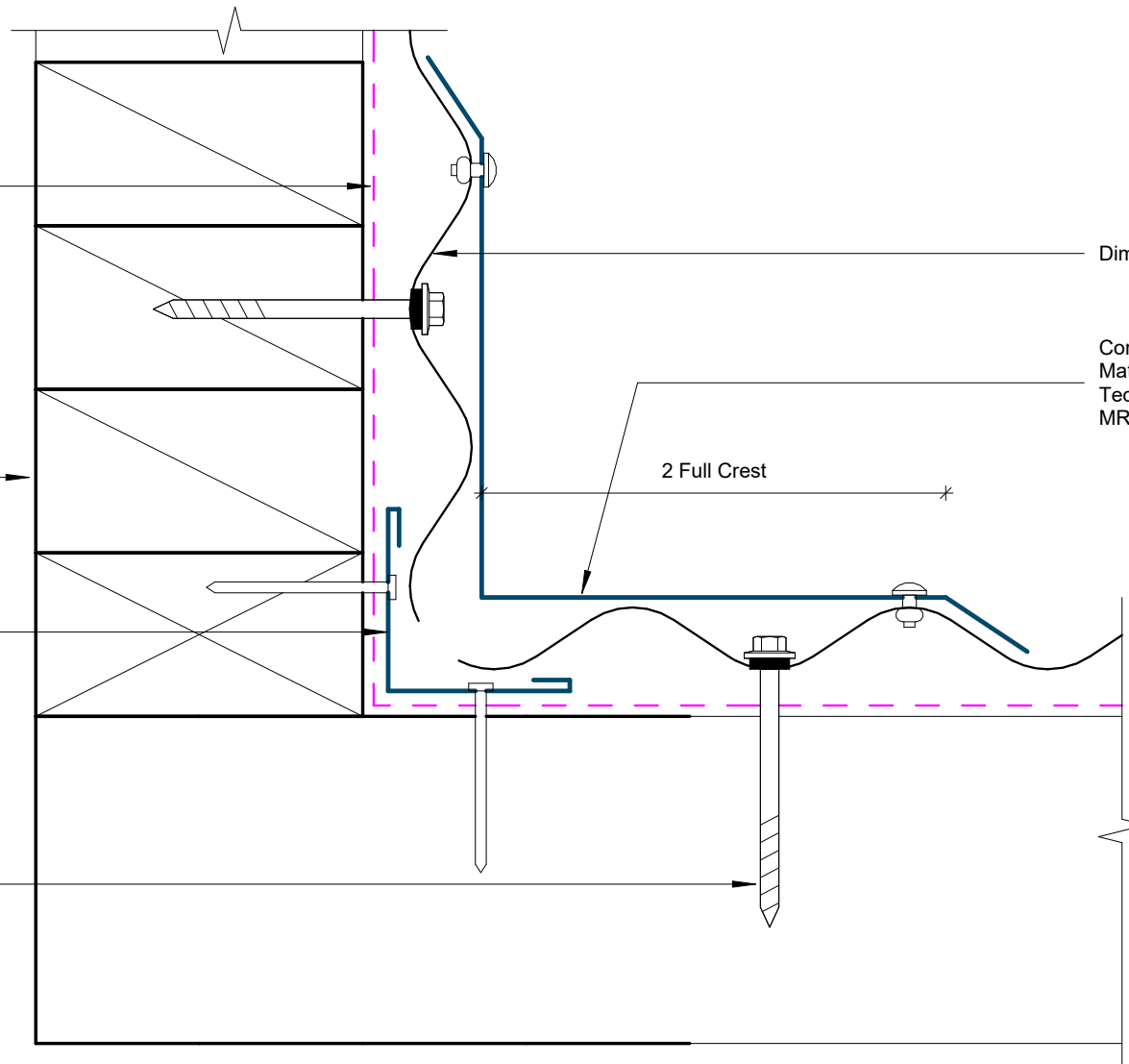
Pre finished secondary flashing

Prefinished screw with
neoprene washer

Dimond Corrugate cladding

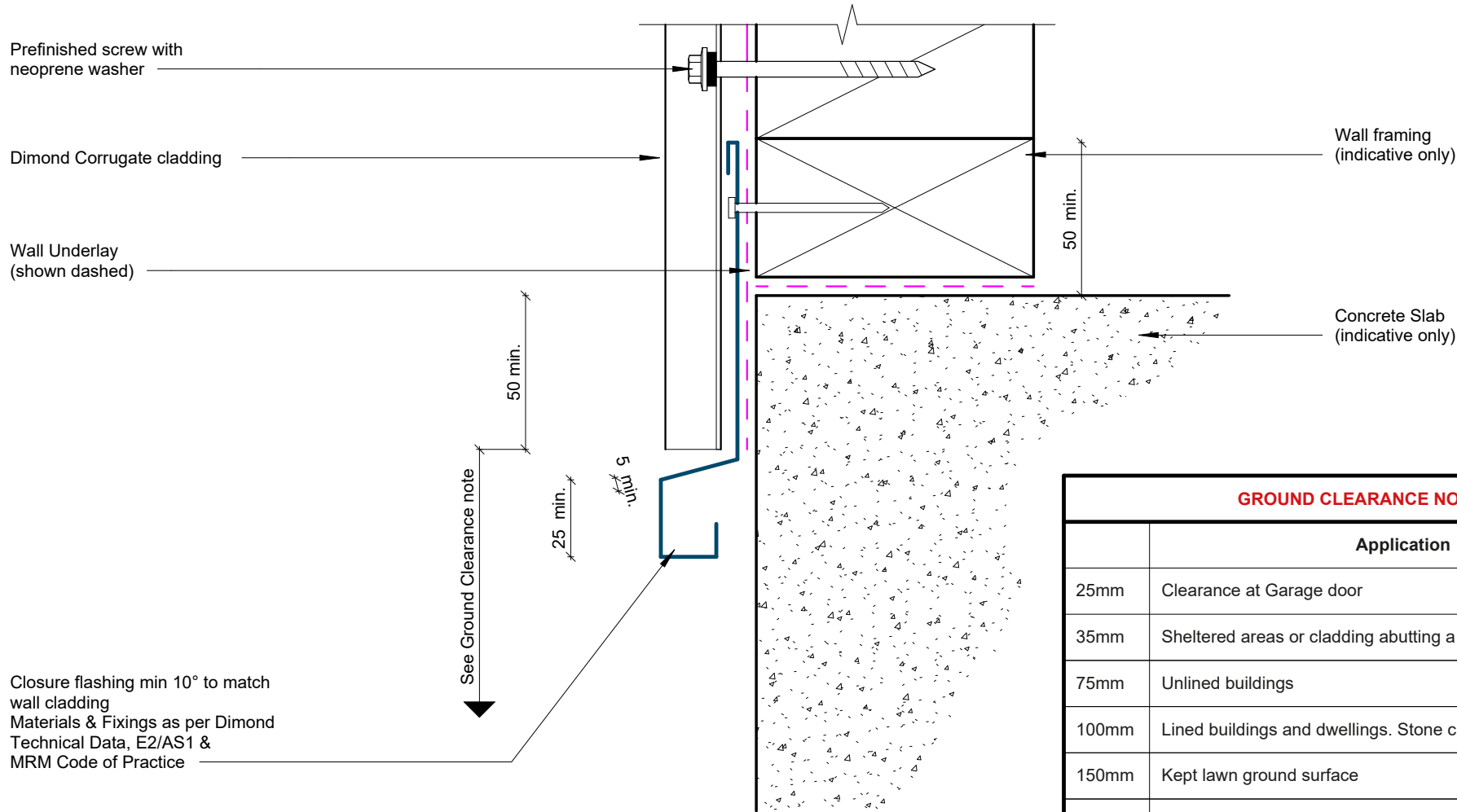
Corner flashing to match wall cladding
Materials & Fixings as per Dimond
Technical Data, E2/AS1 &
MRM Code of Practice

2 Full Crest



Internal Corner Detail

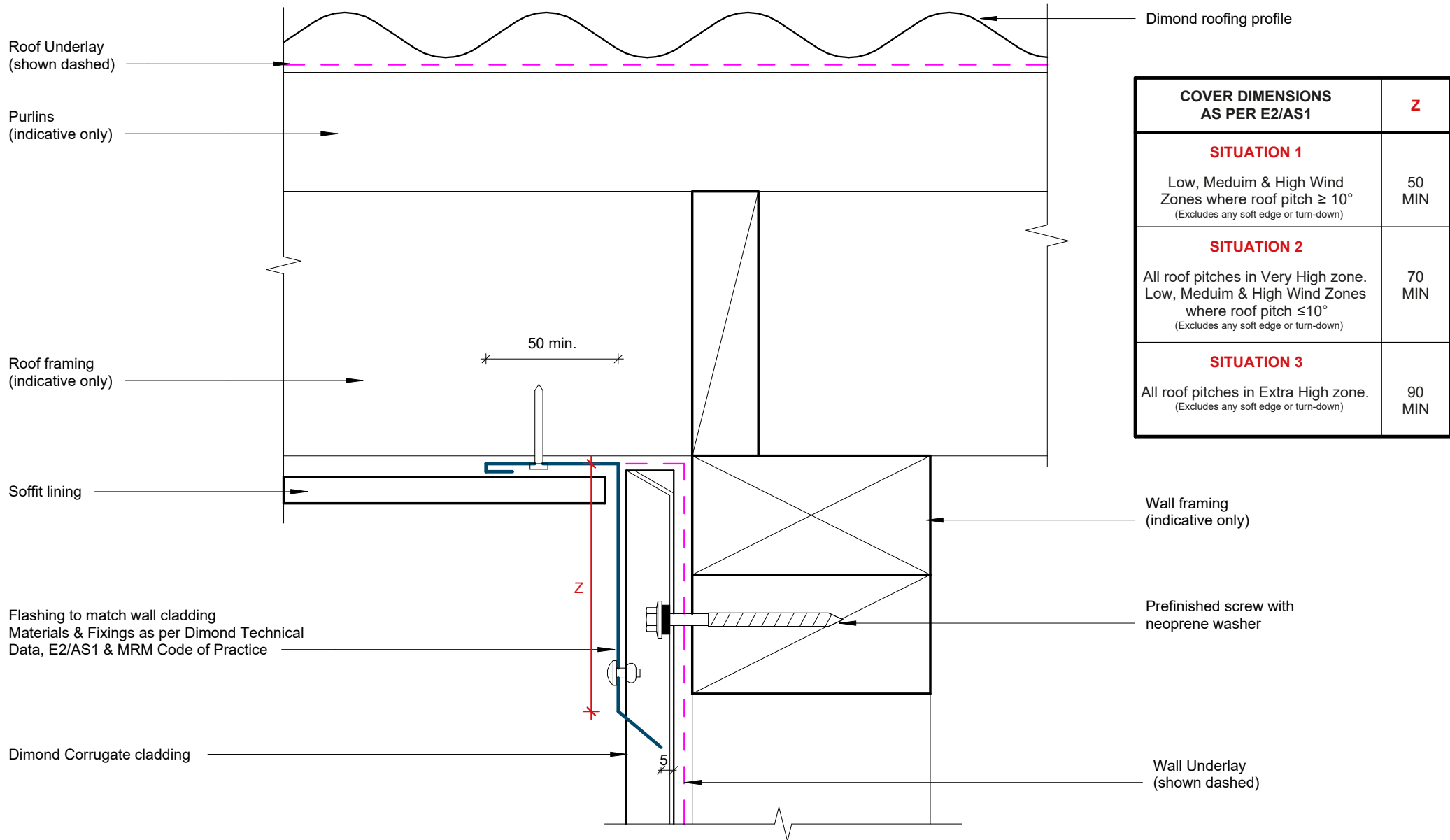
Rev: 1 **Corrugate Residential Vertical Cladding**
Direct Fixed



GROUND CLEARANCE NOTE

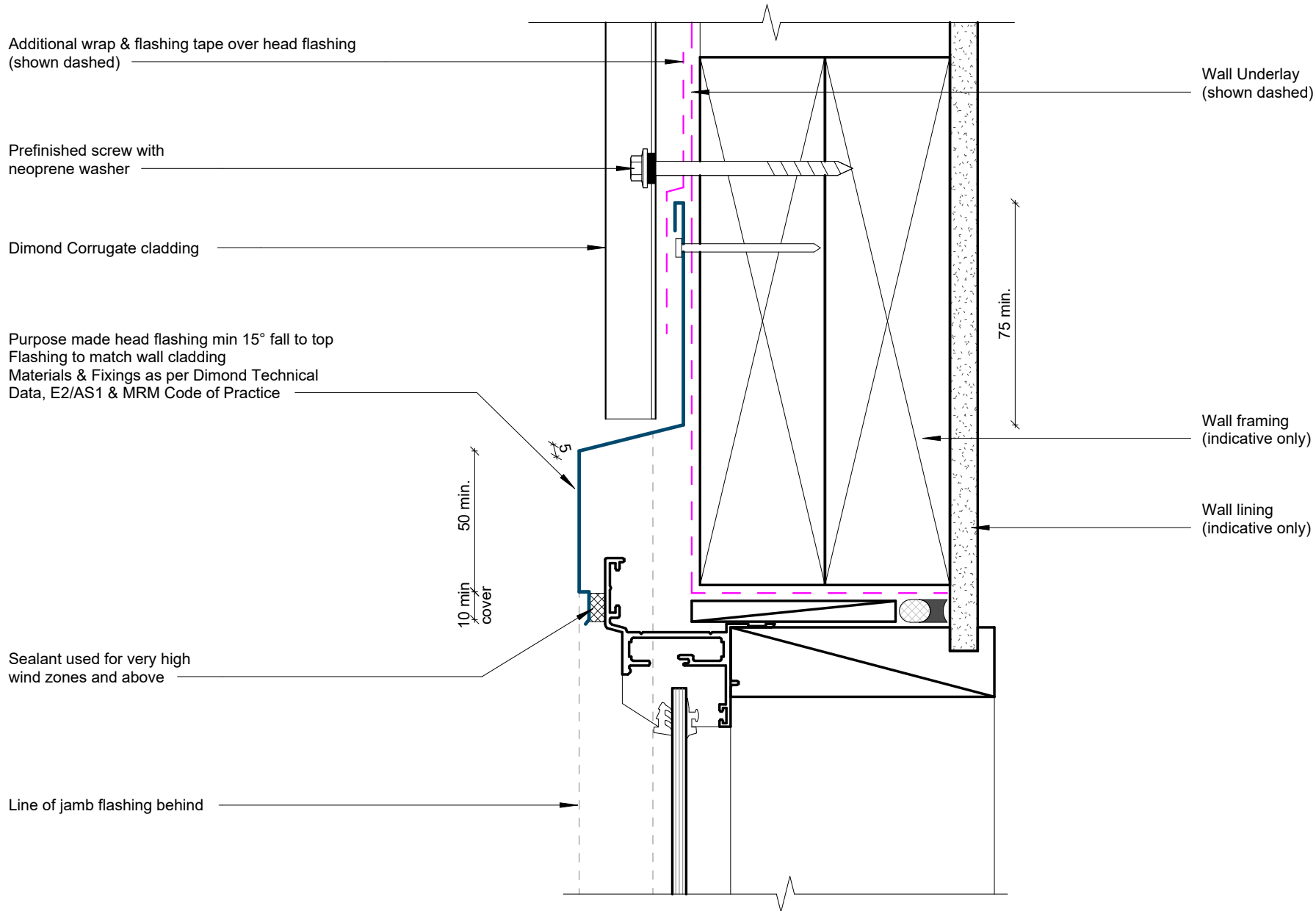
GROUND CLEARANCE NOTE	
	Application
25mm	Clearance at Garage door
35mm	Sheltered areas or cladding abutting a deck
75mm	Unlined buildings
100mm	Lined buildings and dwellings. Stone chip ground surface
150mm	Kept lawn ground surface
175mm	Pasture ground surface

Base Detail

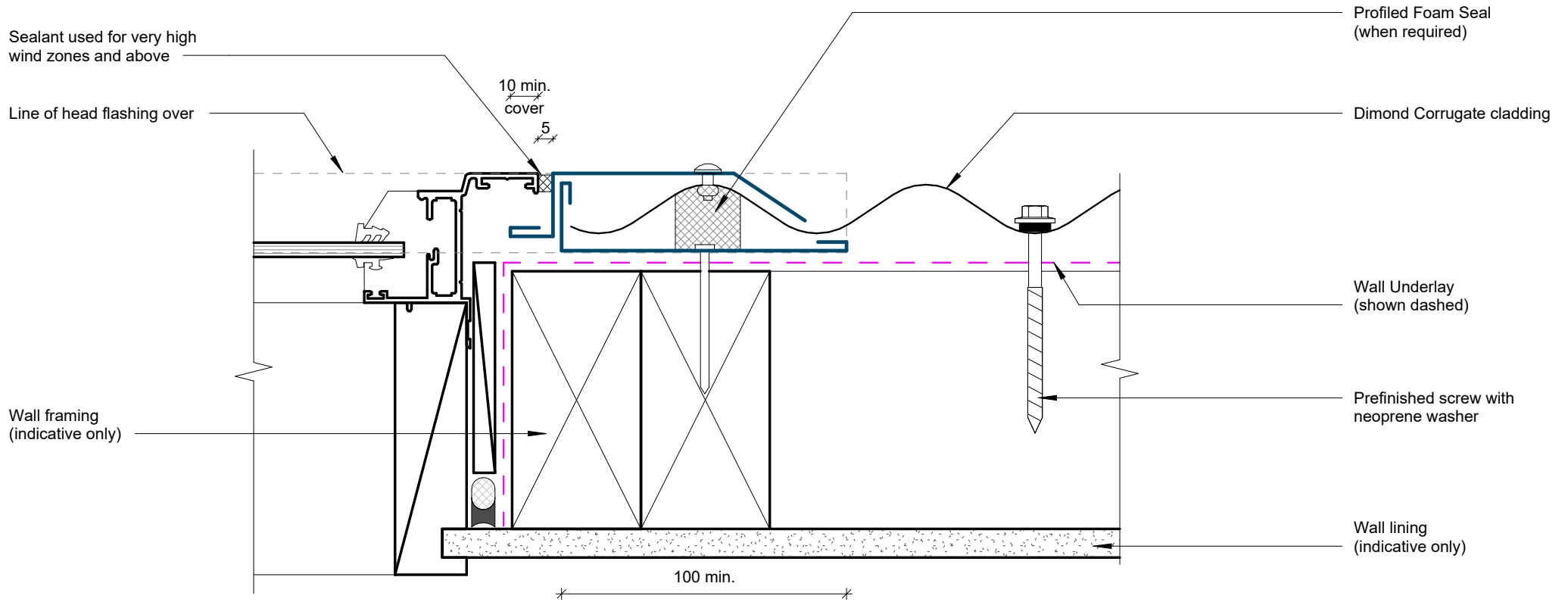


COVER DIMENSIONS AS PER E2/AS1	Z
SITUATION 1 Low, Medium & High Wind Zones where roof pitch $\geq 10^\circ$ (Excludes any soft edge or turn-down)	50 MIN
SITUATION 2 All roof pitches in Very High zone. Low, Medium & High Wind Zones where roof pitch $\leq 10^\circ$ (Excludes any soft edge or turn-down)	70 MIN
SITUATION 3 All roof pitches in Extra High zone. (Excludes any soft edge or turn-down)	90 MIN

Soffit Detail

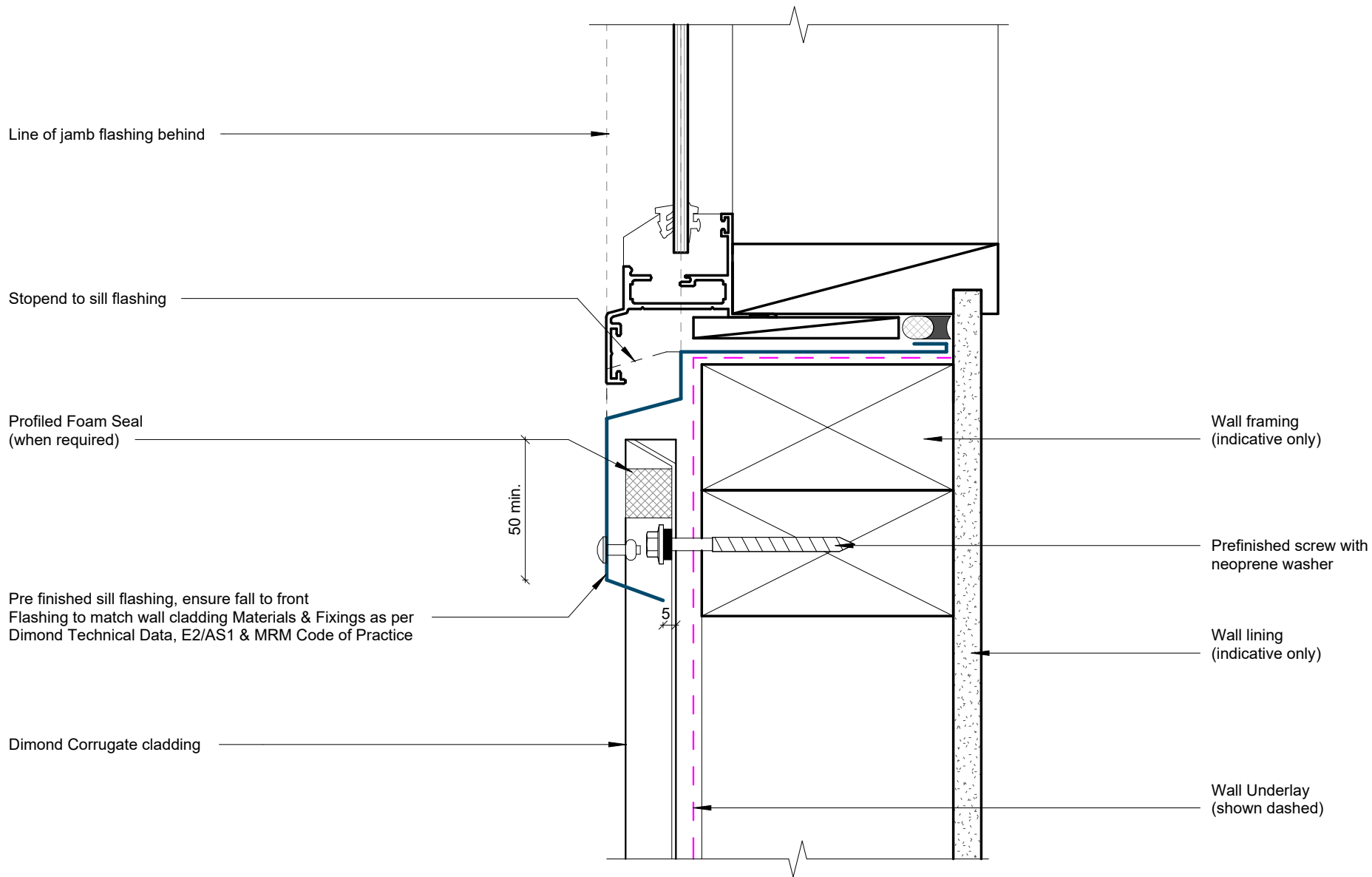


Window Head Detail

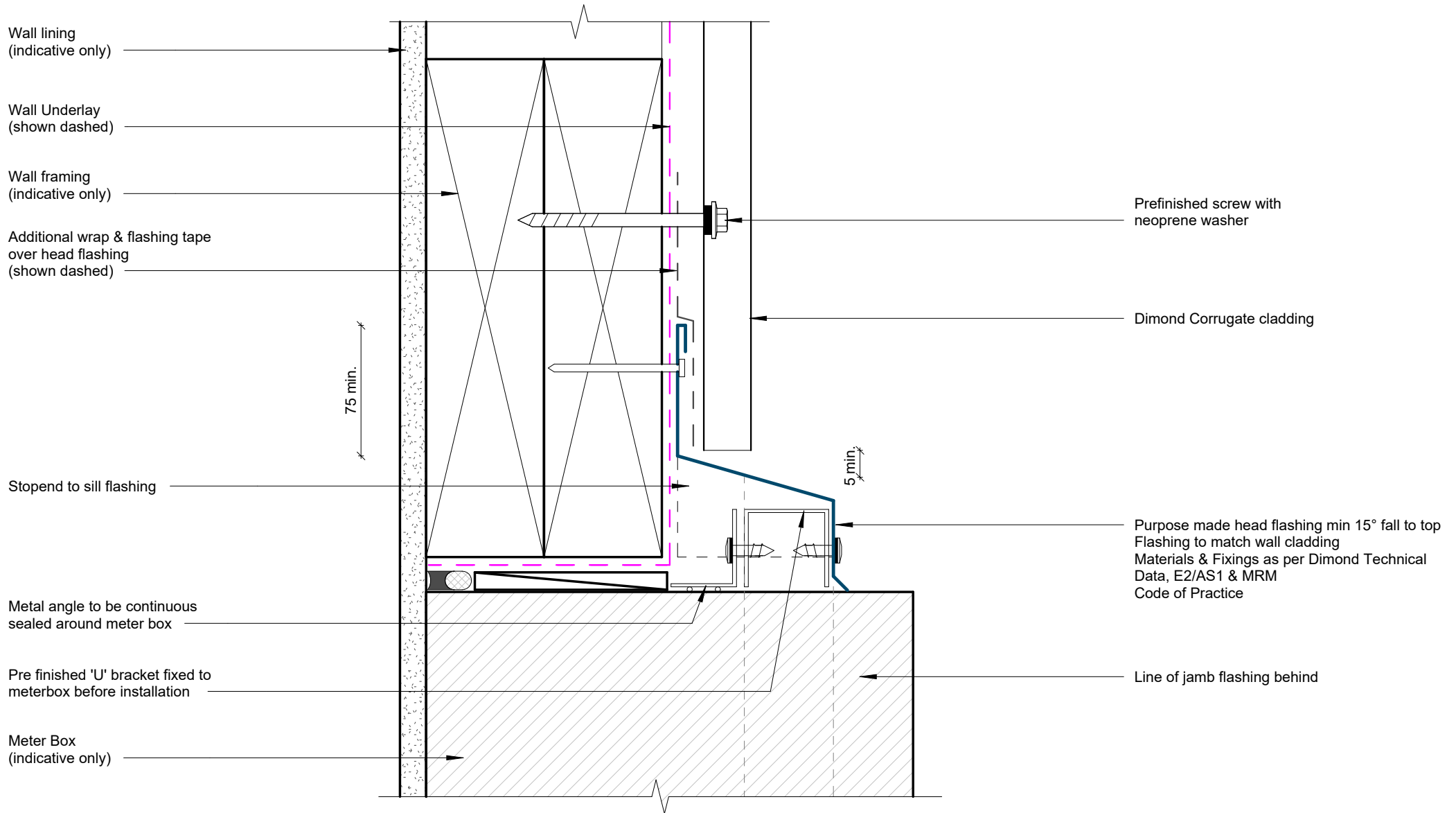


Window Jamb Detail

Rev: 1 **Corrugate Residential Vertical Cladding**
Direct Fixed

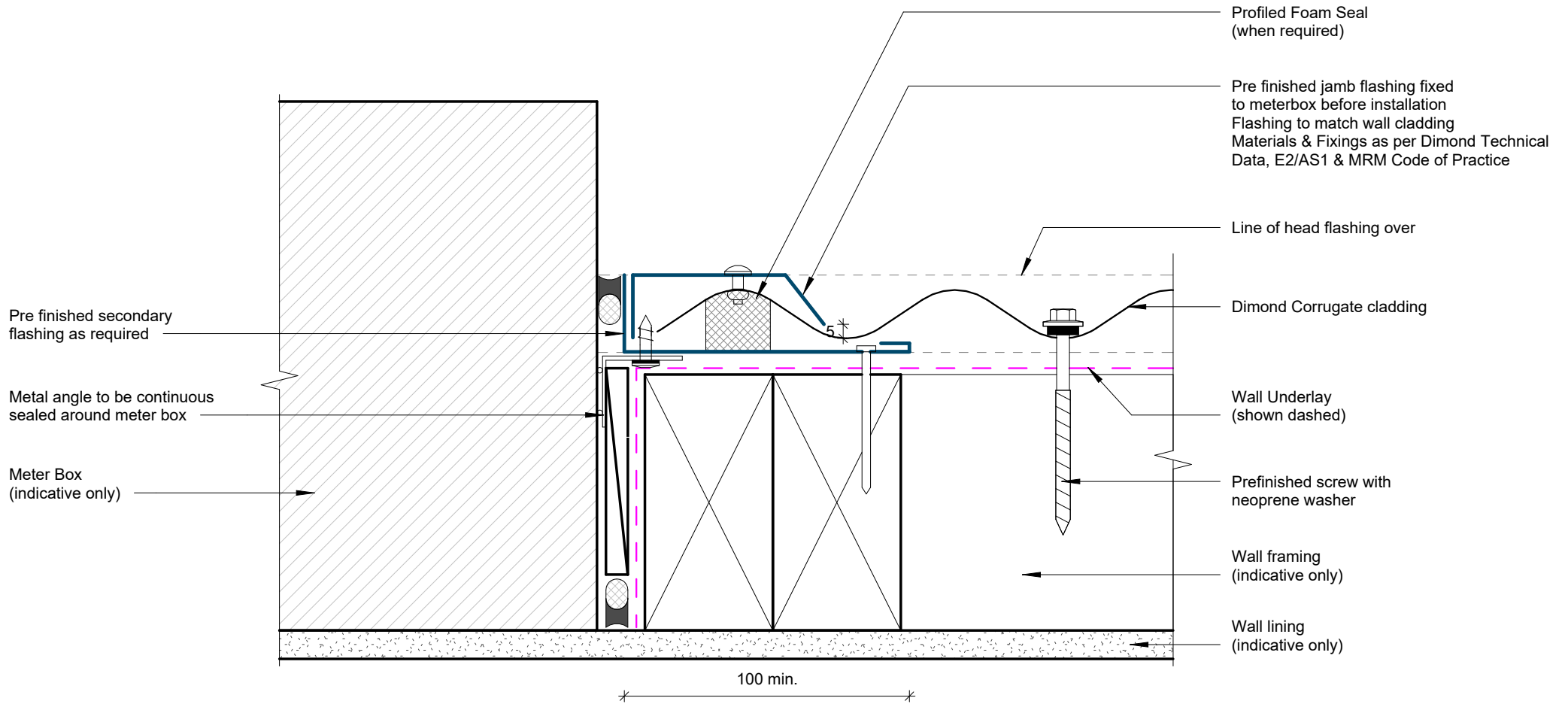


Window Sill Detail



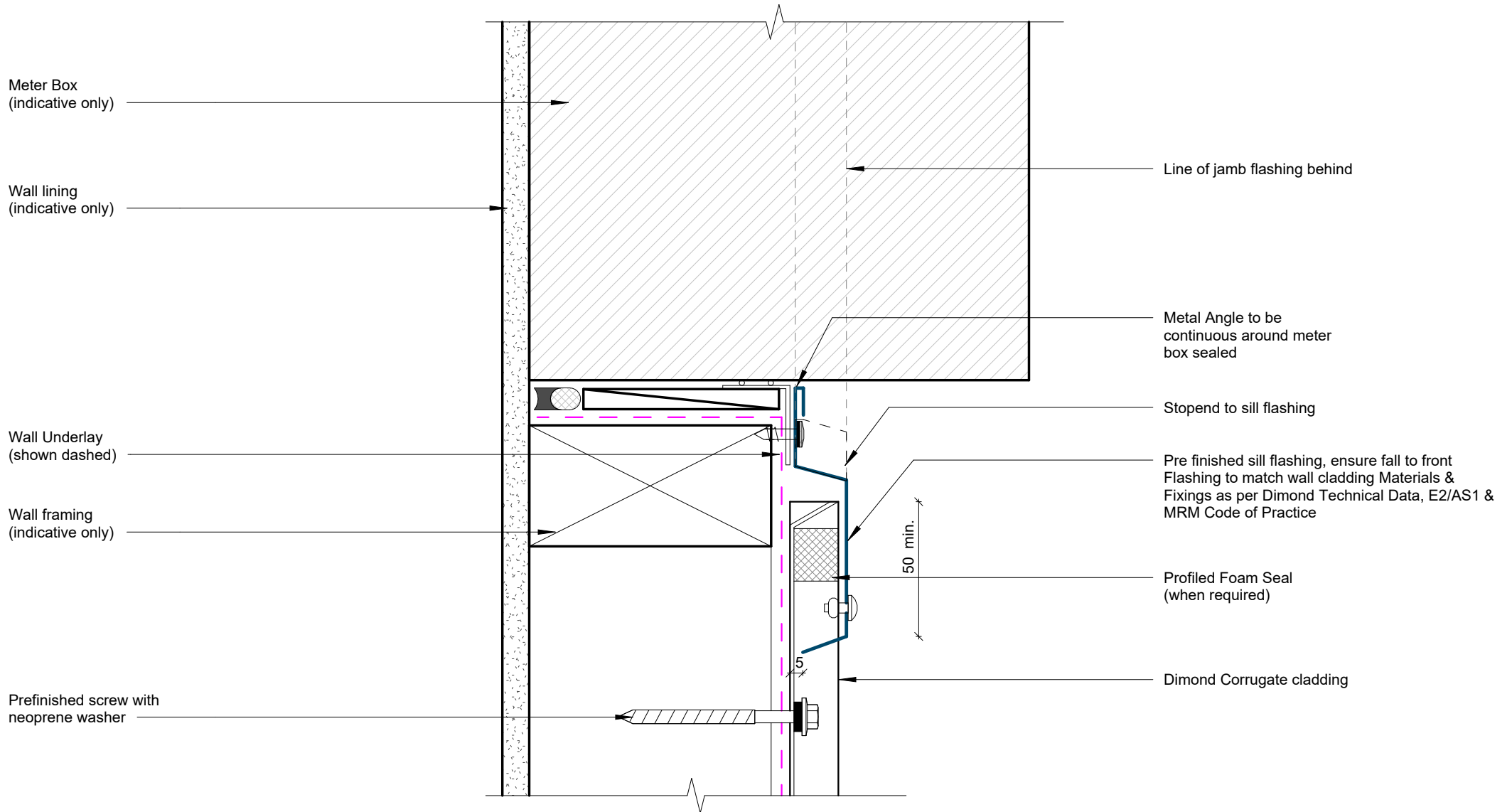
Meterbox Head Detail

Rev: 1 **Corrugate Residential Vertical Cladding**
Direct Fixed



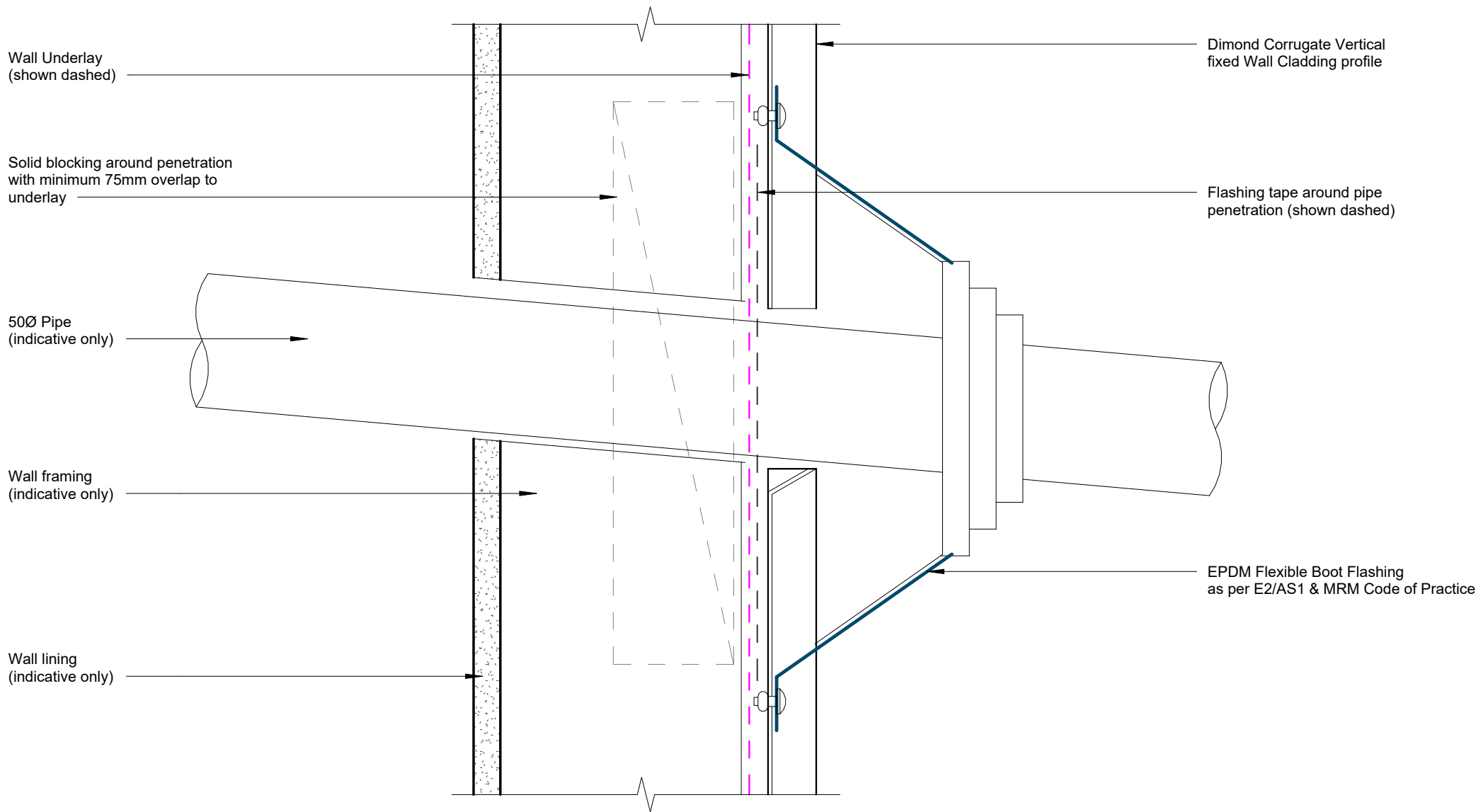
Meterbox Jamb Detail

Rev: 1 Corrugate Residential Vertical Cladding
Direct Fixed



Meterbox Sill Detail

Rev: 1 **Corrugate Residential Vertical Cladding**
Direct Fixed



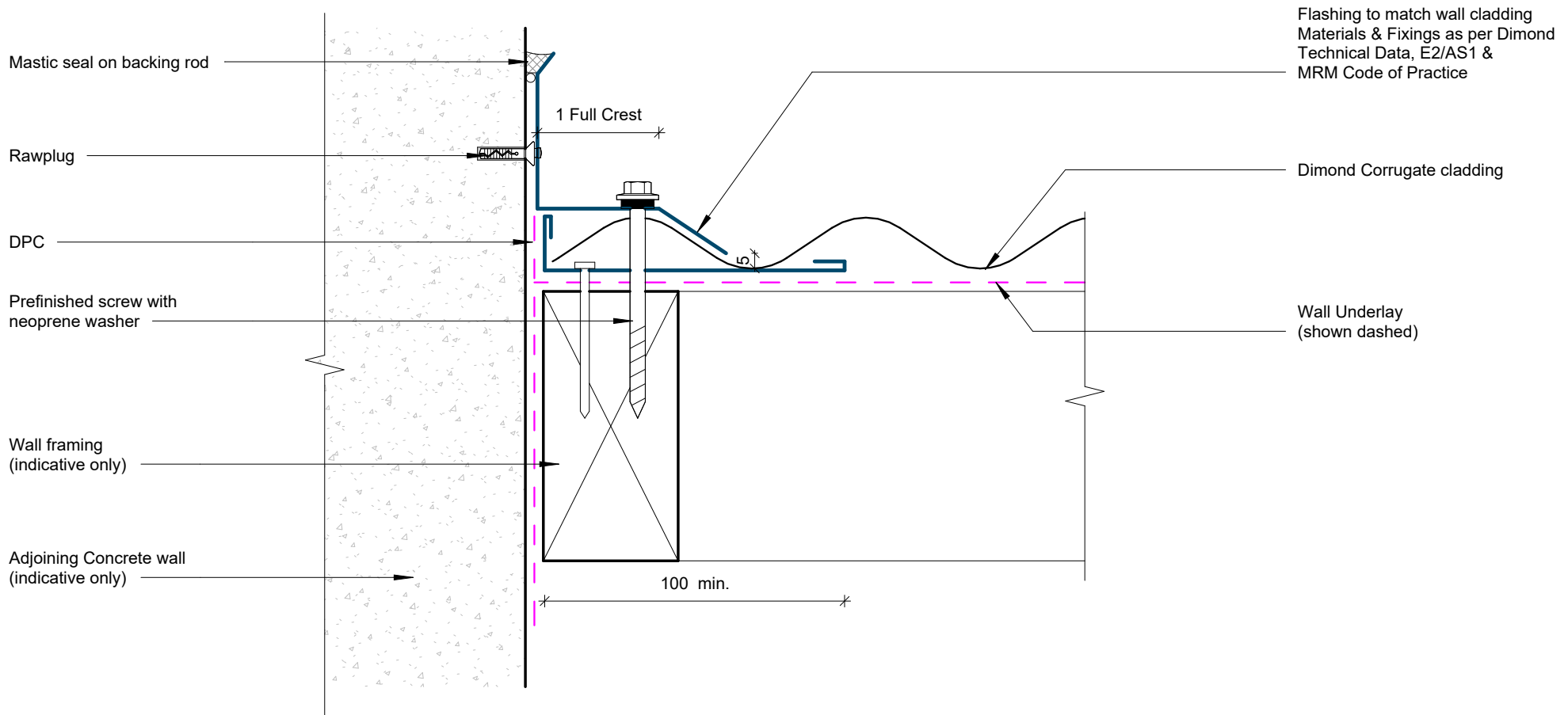
Pipe Penetration Detail

Rev: 1 **Corrugate Residential Vertical Cladding**
Direct Fixed

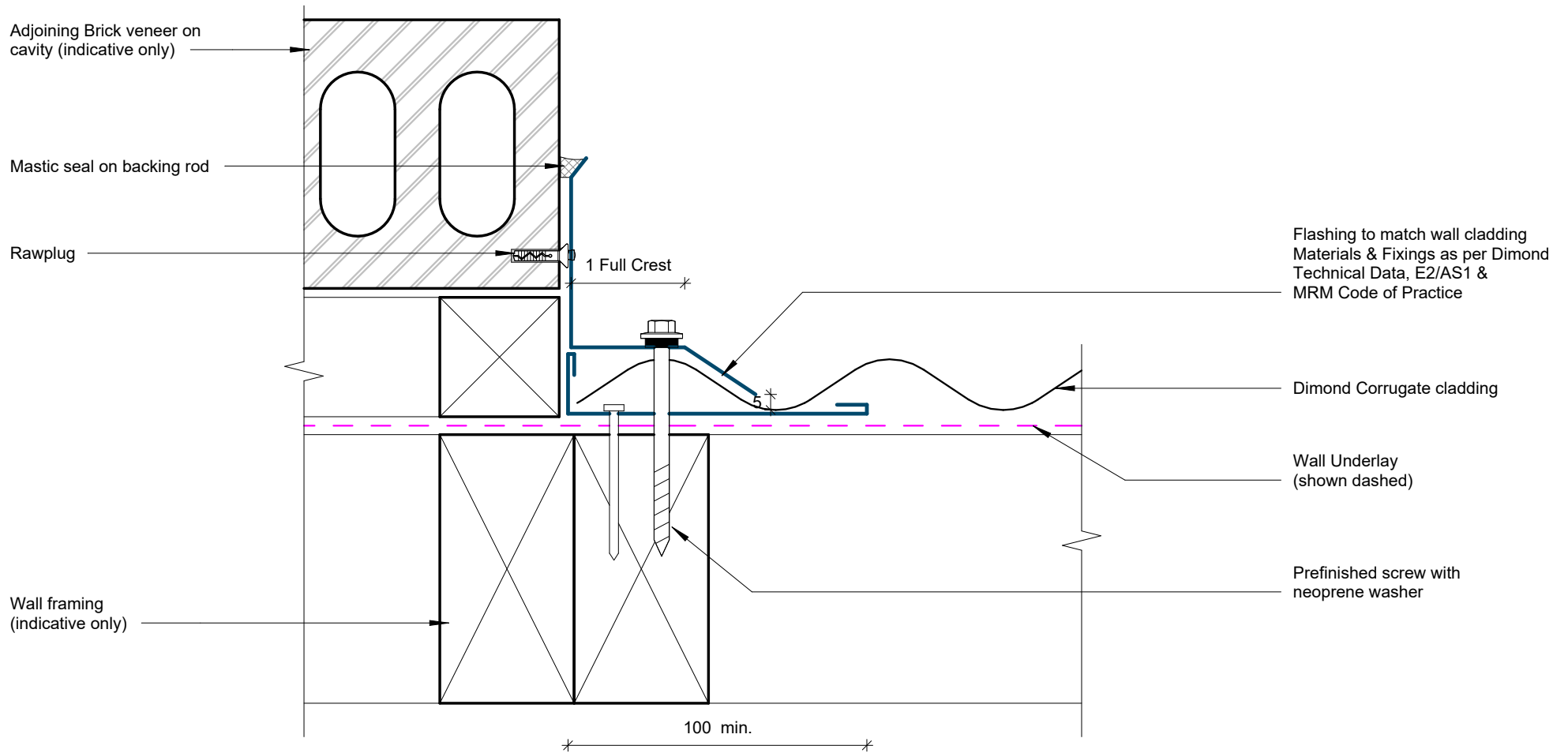


©Dimond 2023, all rights reserved. The information and specifications contained in this document are proprietary to Dimond and may not be used other than for the purpose of designing or building a roof or roofing system solely using products supplied or approved by Dimond ("Permitted Purpose"). You may copy this document solely for the Permitted Purpose, but may not otherwise copy, publish, distribute or modify this document without Dimond's prior written consent. Dimond will not be liable for any use of this document or information and specifications contained in this document, other than for the Permitted Purpose

Date: July 2025 Scale: 1 : 2 Sheet: **CRVC15**

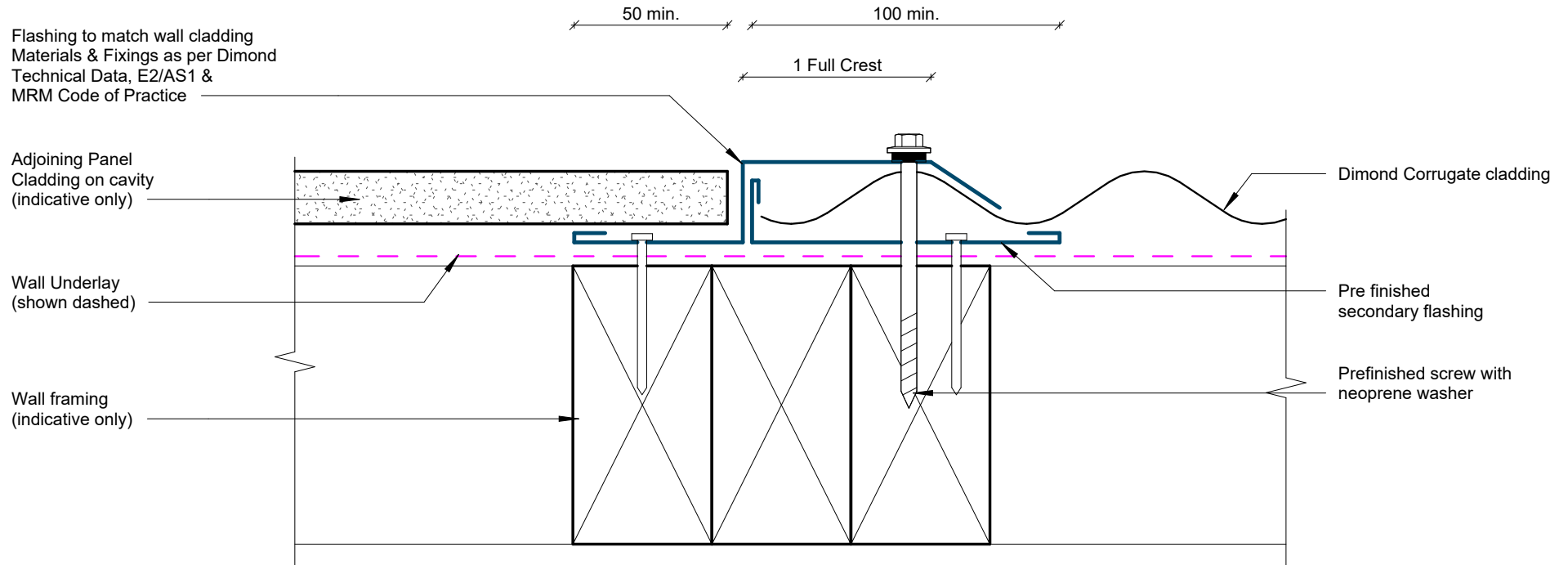


Cladding to Concrete Junction Detail



Cladding to Brick Junction Detail

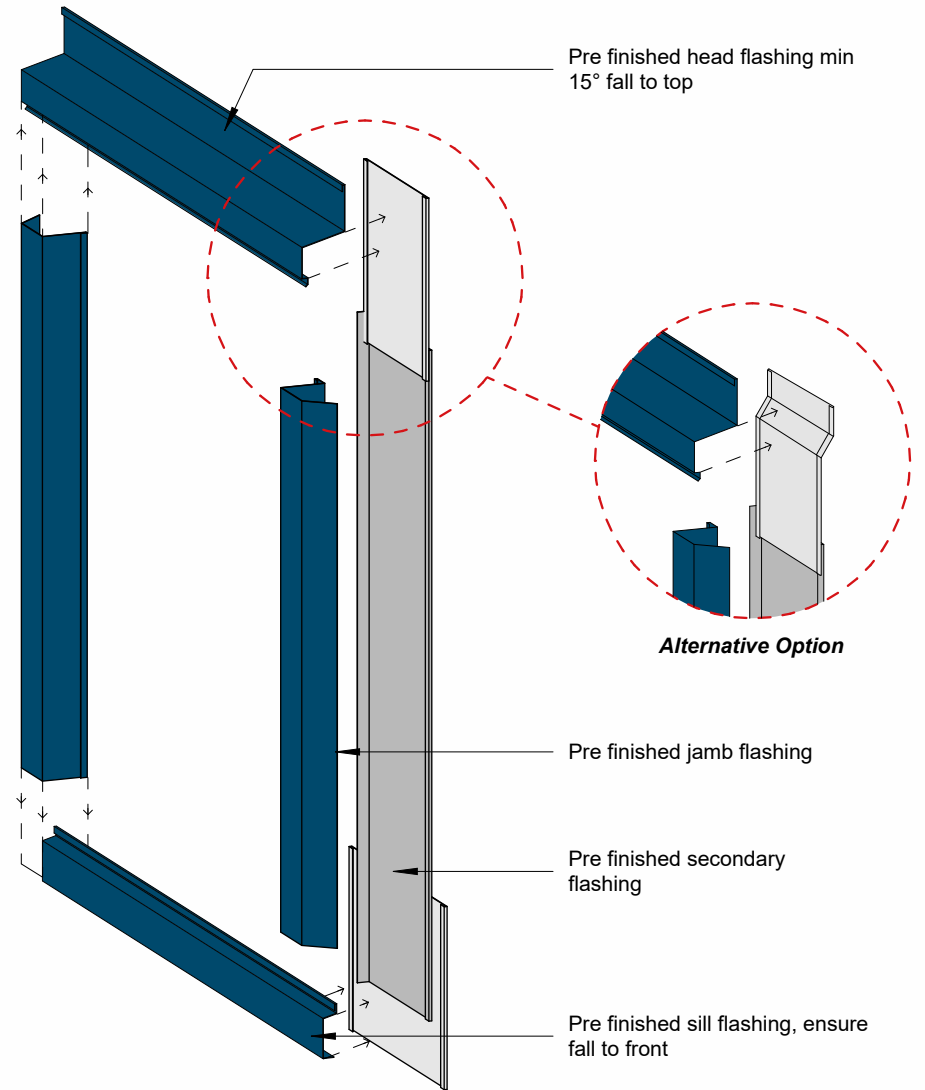
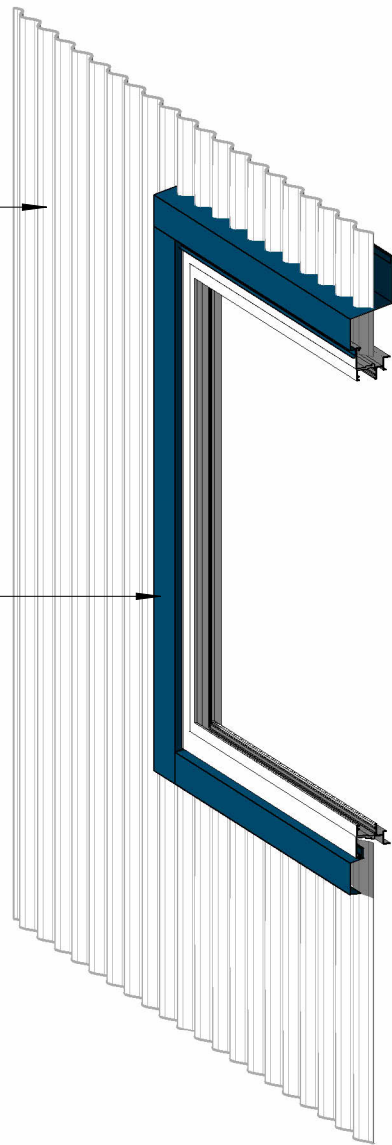
Rev: 1 **Corrugate Residential Vertical Cladding**
Direct Fixed



Cladding to Panel Junction Detail

Dimond Corrugate cladding

Aluminium joinery frame
(indicative only)



Flashing to match wall cladding
Materials & Fixings as per Dimond Technical Data, E2/AS1 & MRM Code of Practice

3D Window Flashing Detail

Rev: 1 Corrugate Residential Vertical Cladding